



Linkside, Woodside Park, N12 7LE

Asking Price £925,000 Freehold

Council Tax Band F

REAL ESTATES
Est.1981

Estate Agents · Residential Sales · Investments · Lettings

Real Estates are delighted to present this THREE BEDROOM SEMI-DETACHED family home on a prime residential street on the edge of Woodside Park and West Finchley.

The ground floor accommodation comprises a spacious entrance hallway, with guest cloakroom under the stairs, plus a double reception and dining space, separate kitchen and small porch.

The upstairs features two large bedrooms, each with fitted wardrobes, one good-sized single bedroom and the family bathroom with separate bath and shower. Further extensions are possible into the loft and out the rear (STPP).

There is a private driveway to the front as well as a modern shed and approximate 80 foot south easterly facing garden to the rear.

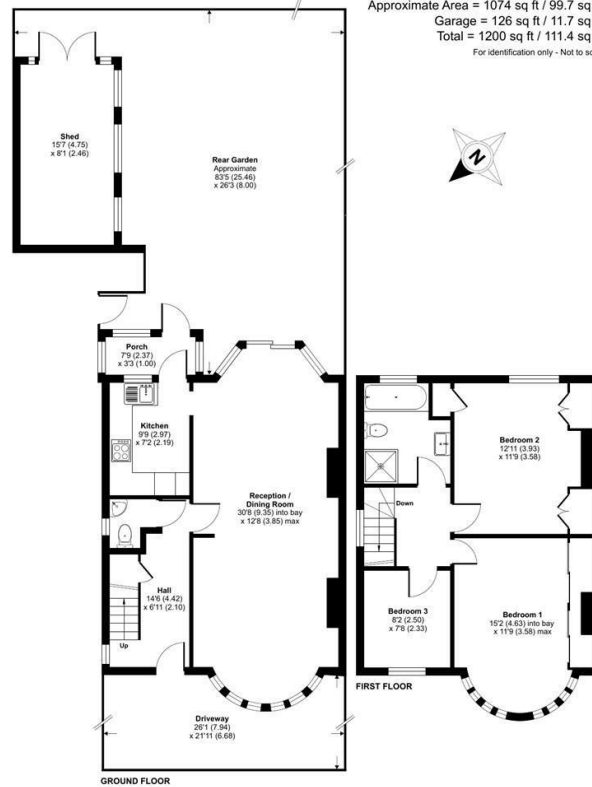
Linkside is a short walk from West Finchley Underground Station, the Dollis Valley Greenwalk and shops/cafes on Sussex Ring, Woodside Park.





Linkside, London, N12

Approximate Area = 1074 sq ft / 99.7 sq m
 Garage = 126 sq ft / 11.7 sq m
 Total = 1200 sq ft / 111.4 sq m
 For identification only - Not to scale



Floor plan produced in accordance with RICS Property Measurement 2nd Edition, incorporating International Property Measurement Standards (IPMS2 Residential). © nichocom 2025. Produced for Real Estates. REF: 1219375

Energy Efficiency Rating		Current	Potential
Very energy efficient - lower running costs	A		
B			
C			
D		60	
E			
F			
G			
Not energy efficient - higher running costs			
			77

EU Directive

